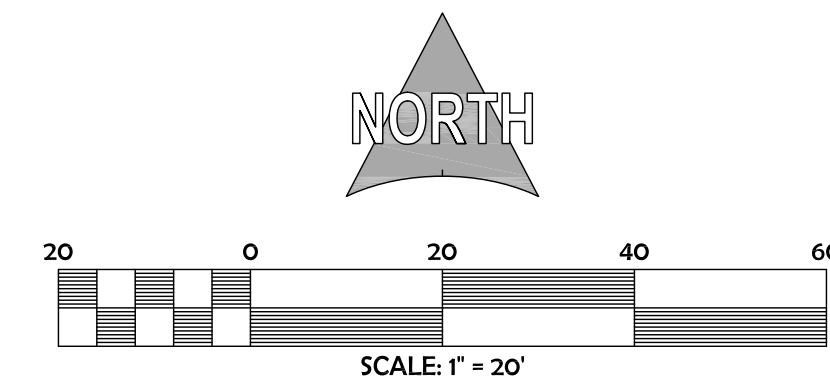


# RV PARK SITE PLAN PETER & MEGAN STEAD

4940 N HWY 91  
ENOCH, UT 84721



BY: MEGAN STEAD



CURVE TABLE					
CURVE #	LENGTH	RADIUS	DELTA	CHORD DIRECTION	CHORD LENGTH
C1	7.28	25.00	16°41'08"	S64°57'56"W	7.25
C2	70.76	70.00	57°55'16"	N43°51'10"E	67.79

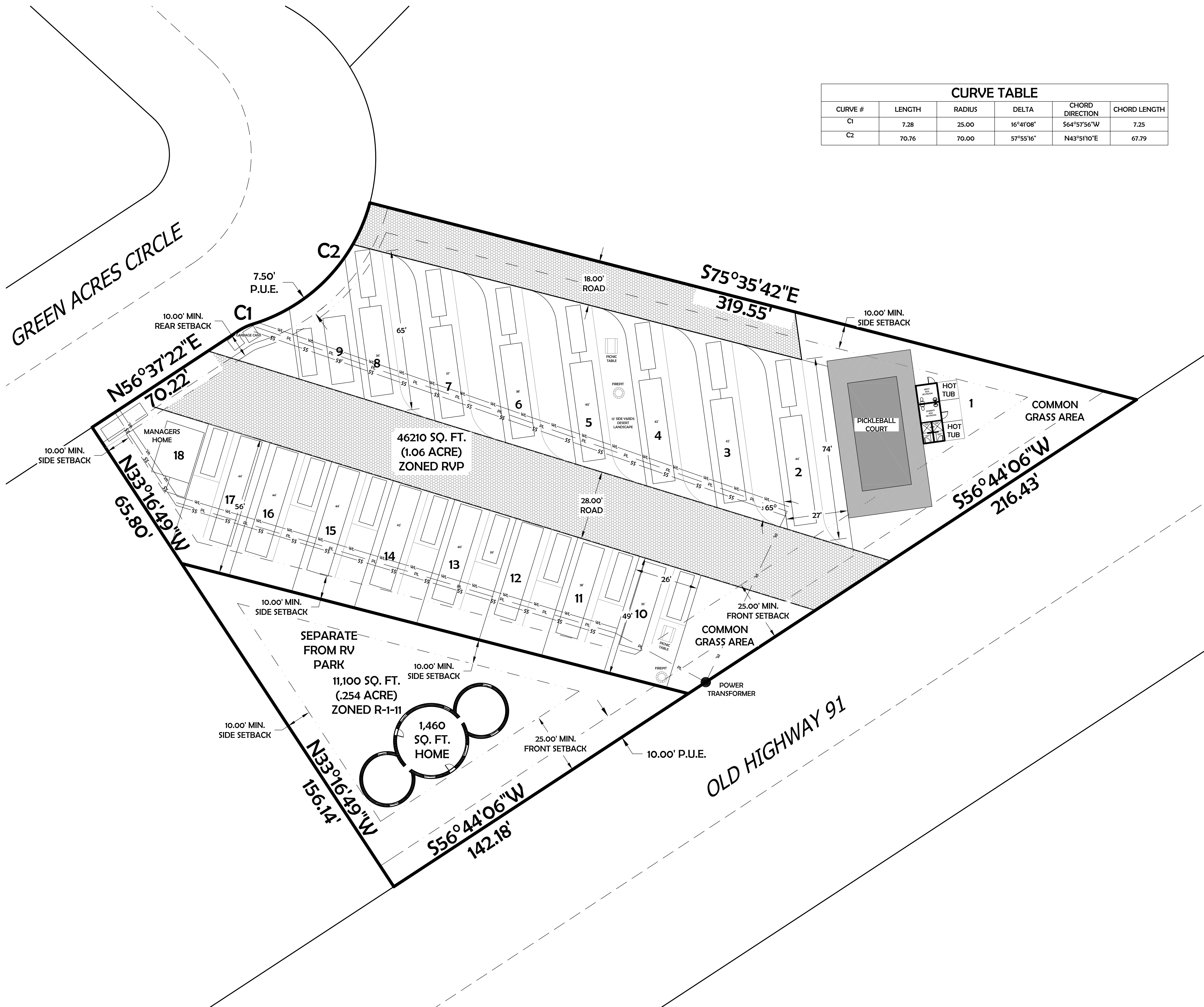
**PROPERTY INFORMATION:**

APN NUMBER: A-0916-0002-0003  
ACC NUMBER: 0112992

**LEGEND**

- PROPERTY LINE
- ADJACENT PROPERTY LINE
- MINIMUM SETBACKS
- PUBLIC UTILITY EASEMENT
- PROPOSED POWER/COMMUNICATION LINES
- PROPOSED WATER LINE
- PROPOSED SANITARY SEWER LINE

**UTILITY NOTE**  
ALL UTILITY LOCATIONS APPROXIMATE  
FIELD VERIFY CONNECTION POINTS



RV PARK SITE PLAN  
**MEGAN & PETER STEAD**  
ZONE CHANGE  
4940 N HWY 91  
ENOCH, UT 84721

DATE:  
May 17, 2022

SCALE: 1"=20'

SHEET  
**SP**

SHEET 1 OF 1