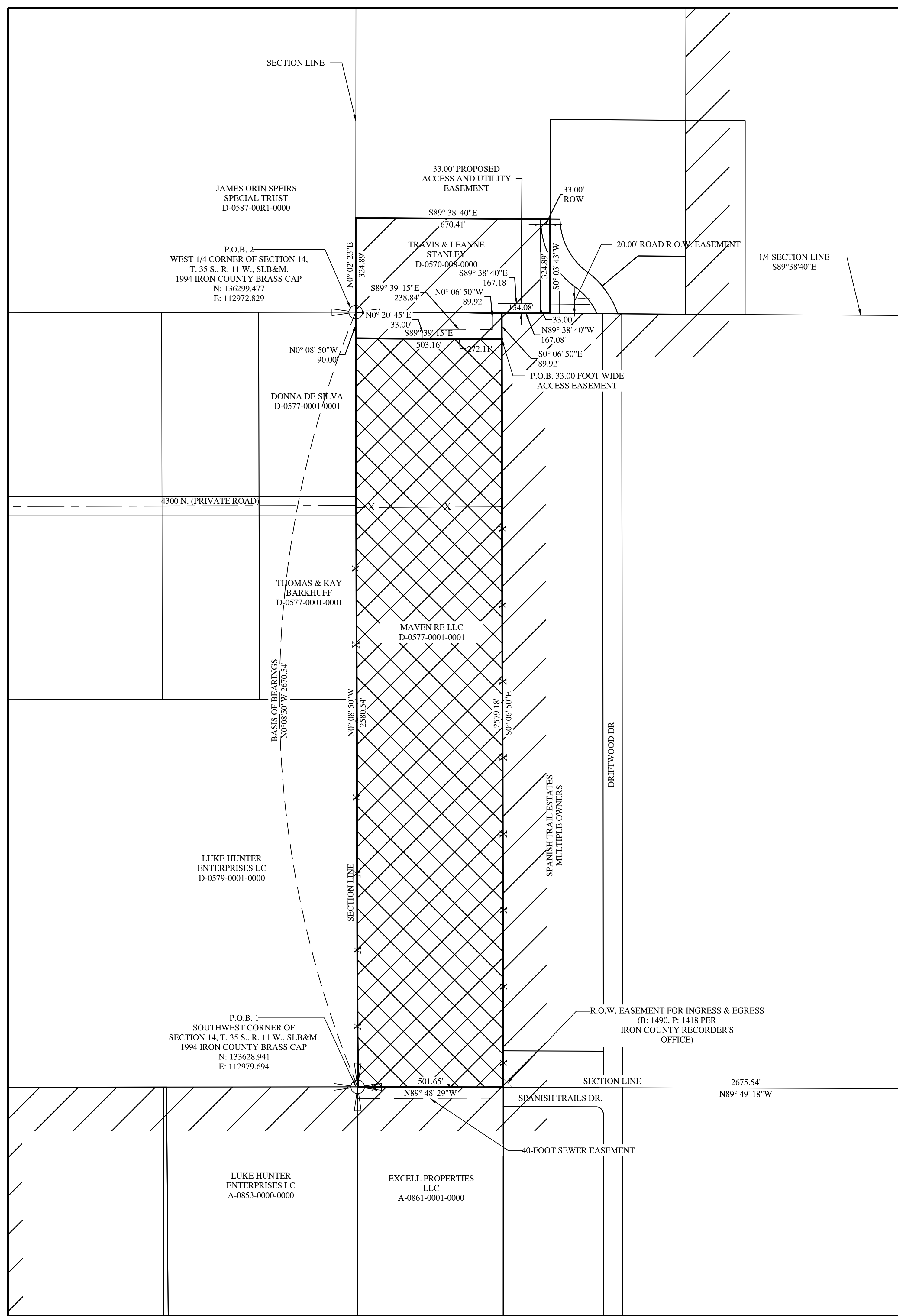
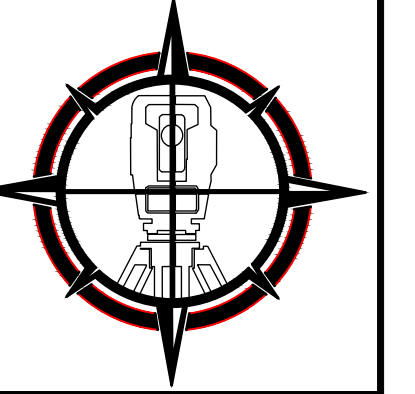


ASPEN ACRES ENOCH ANNEXATION PLAT

WITHIN SECTION 4, T. 35 S., R. 11 W., SLB&M
IRON COUNTY, UTAH

**P
&
P
PLATT, INC**
CONSULTING
CIVIL ENGINEERS

LAND SURVEYORS
195 N. 100 E.
CEDAR CITY, UT 84720
TEL: (435) 586-6151
FAX: (435) 586-8567
EMAIL:
PLATT@INFOWEST.COM



ROMNEY ENOCH ANNEXATION DESCRIPTION

BEGINNING AT THE SOUTHWEST CORNER OF SECTION 14, TOWNSHIP 35 SOUTH, RANGE 10 WEST, SLB&M, THENCE N0°08'50\"/>

SURVEYOR'S CERTIFICATE

I, ROBERT B. PLATT PROFESSIONAL UTAH LAND SURVEYOR NUMBER 164659, CERTIFY THAT THIS ANNEXATION PLAT HAS BEEN PREPARED UNDER MY DIRECTION AND THAT THIS PLAT PORTRAYS THE ANNEXATION BOUNDARIES TO BE ADOPTED BY THE ENOCH CITY COUNCIL.

DATE: _____ ROBERT B. PLATT
UTAH P.L.S. #164659.

CITY ATTORNEY APPROVAL

I, JUSTIN WAYMENT, CITY ATTORNEY FOR ENOCH CITY CORPORATION, CERTIFY THAT I HAVE EXAMINED THIS ANNEXATION PLAT AND RECOMMEND IT TO THE ENOCH CITY COUNCIL FOR APPROVAL ON THIS THE _____ DAY OF _____, 2022.

ENOCH CITY ATTORNEY

PLANNING COMMISSION APPROVAL

THIS ANNEXATION PLAT HAS BEEN APPROVED BY THE ENOCH CITY PLANNING COMMISSION, AND IS HEREBY RECOMMENDED TO THE CITY COUNCIL FOR APPROVAL ON THIS THE _____ DAY OF _____, 2022.

ENOCH CITY ATTORNEY

CERTIFICATE OF ACCEPTANCE

I, GEOFFREY CHESNUT, MAYOR OF ENOCH CITY CORPORATION, CERTIFY THAT THIS ANNEXATION PLAT HAS BEEN APPROVED BY THE ENOCH CITY COUNCIL AND HEREBY ORDER IT FILED FOR RECORD IN THE OFFICE OF THE IRON COUNTY RECORDER ON THIS THE _____ DAY OF _____, 2022.

ATTEST: _____ MAYOR
CITY RECORDER

DEPUTY IRON COUNTY SURVEYOR'S CERTIFICATE

I, HEREBY CERTIFY THAT I HAVE EXAMINED AND APPROVE THIS ANNEXATION PLAT.

DATE: _____ DEPUTY IRON COUNTY
SURVEYOR

CERTIFICATE OF RECORDING

I, CARRI JEFFRIES, COUNTY RECORDER OF IRON COUNTY, UTAH DO HEREBY CERTIFY THAT THIS ANNEXATION PLAT, WAS FILED FOR RECORD IN MY OFFICE ON THIS THE _____ DAY OF _____, 2022.

COUNTY RECORDER

BOOK: _____ PAGE: _____
ENTRY NO: _____ FEE: _____
RECORDED AT THE REQUEST OF: _____

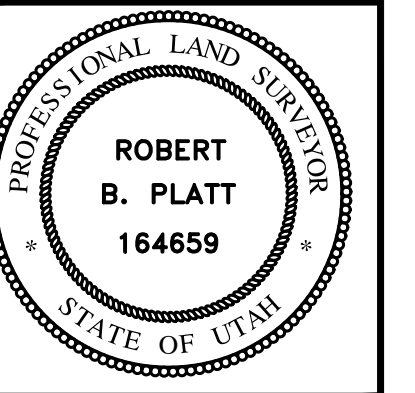
NOTE:

BASIS OF BEARINGS IS N0°08'50\"/>

- LEGEND**
- SECTION
 - 1/4 CORNER
 - ANNEXATION BOUNDARY
 - EXISTING TOWN BOUNDARY
 - RIGHT-OF-WAY MARKER
 - ANGLE POINT BLM MONUMENT

REVISION	DATE	DESCRIPTION

**ROMNEY ENOCH ANNEXATION
PLAT**
WITHIN SECTION 4, T. 35 S., R. 11 W., SLB&M
IRON COUNTY, UTAH



DRAWN BY:
CJ WEAVER
CHECKED BY:
R.B. PLATT
DATE: Apr 18, 2022
SCALE: 1" = 200'
FILE:
P:\Mike\Romney\DWG\Romney
Annexation.dwg
PAGE: 1 OF 1