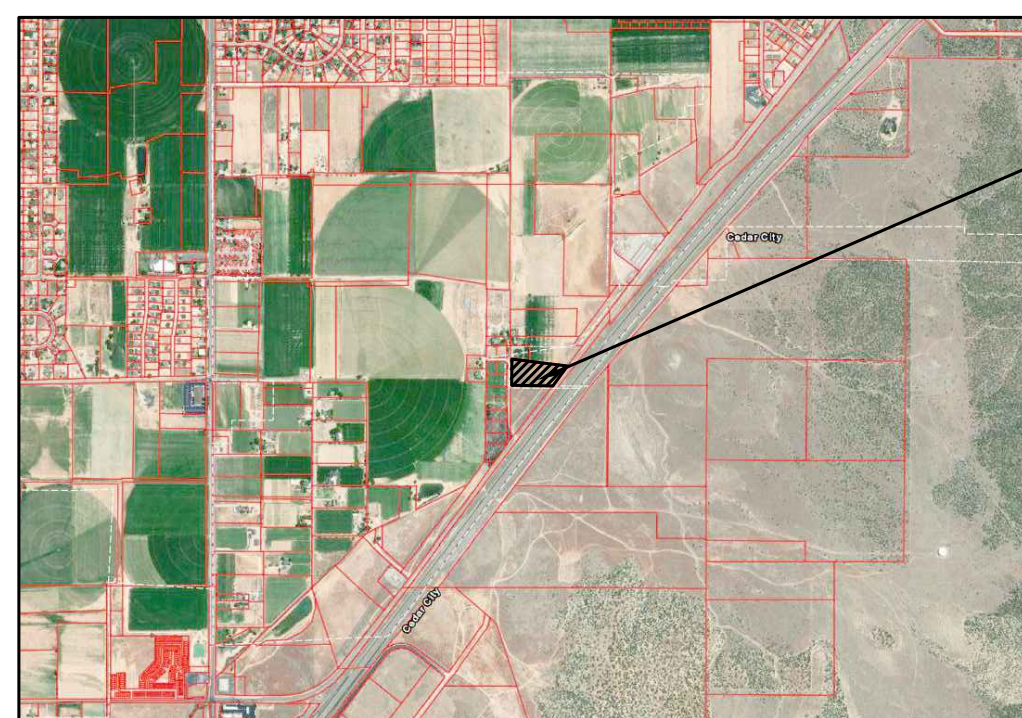
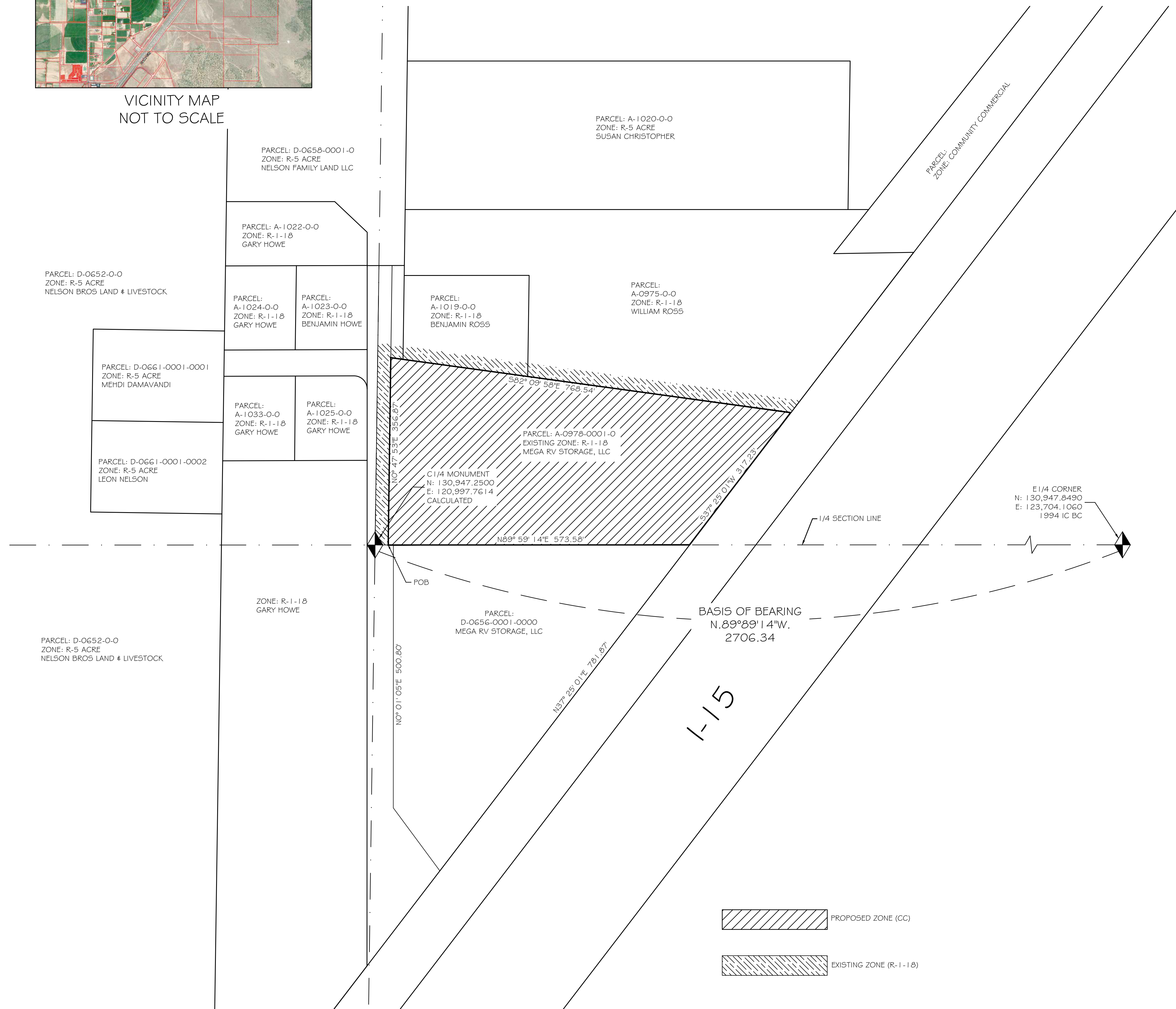
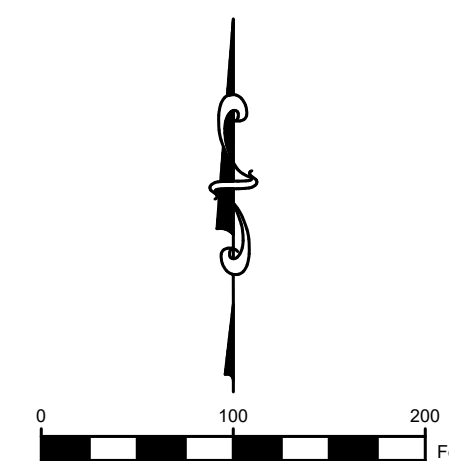


ZONE CHANGE MAP FOR

MEGA RV STORAGE, LLC
WITHIN THE E 1/2 OF SECTION 24, T. 35 S., R. 11 W., SLB#M
ENOCH, IRON COUNTY, UTAH



VICINITY MAP
NOT TO SCALE

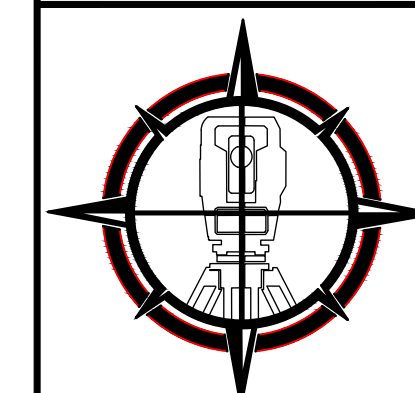


LEGAL DESCRIPTION

BEGINNING N. 89° 59' 14" E. ALONG THE 1/4 SECTION LINE 25.00 FEET FROM THE CENTER 1/4 CORNER OF SECTION 24, T. 35 S., R. 11 W., SLB#M, THENCE N. 0° 47' 53" E. 356.87 FEET, THENCE S. 82° 09' 58" E. 768.54 FEET, THENCE S. 37° 25' 01" W. 317.23 FEET, THENCE S. 89° 59' 14" W. 573.58 FEET TO THE POINT OF BEGINNING.
CONTAINING 4.78 ACRES OF LAND.

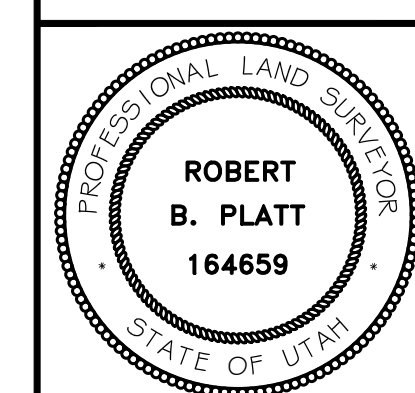
ZONE CHANGE MAP FROM RESIDENTIAL (R-1-1B) TO COMMUNITY COMMERCIAL (CC)

R. PLATT & ASSOCIATES, INC.
CONSULTING CIVIL ENGINEERS
LAND SURVEYORS
195 N. 100 E.
CEDAR CITY, UT 84720
TEL: (435) 586-6151
FAX: (435) 586-8567
EMAIL: PLATT@INFOWEST.COM



REVISION	DATE	DESCRIPTION

ZONE CHANGE MAP FOR
MEGA RV STORAGE, LLC
WITHIN THE E 1/2 OF SECTION 24, T. 35 S., R. 11 W., SLB#M
ENOCH, IRON COUNTY, UTAH



DRAWN BY:
M.E. PELLEGRINI
CHECKED BY:
R.B. PLATT
DATE: Mar 08, 2022
SCALE: 1" = 100'

FILE: F:\Matt\Philip Emerson\2021\Enoch Property\Zone Change Map\Zone Change.dwg